

NEW



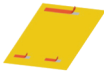
Modulo

ECONOMIC FOLDING-GLUING MACHINE

This is an “entry level” machine, able to process basic converting jobs. Starting from a die-cut cardboard, it can fold and then glue folders, shipping envelopes, CD wallets, and so on. Double side adhesive tape can be also applied to theatre bills, envelopes, advertising posters, etc... This machine can be later updated and connected to METRO line machines.



11-E



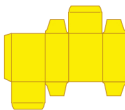
10-A



8-A



35-E



2-C

TECHNICAL FEATURES

- Working grammages:
min. 150 - max. 600 gr. (7 - 30 points)
- Max. size: *cm 78 x 60 (30½ x 23 in.)*
- Min. size: *cm 8 x 8 (3 x 3 in.)*